

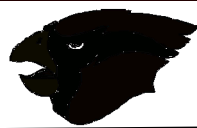
August 18th, 2009

Materials you need every day for class:

- Writing utensil—pencil is preferred, pen if you think you won't make any mistakes.
- Notebook or Notebook Paper
- Appropriate textbook
- Graphing or scientific calculator

Inside this syllabus:

Additional Assistance	2
Calculator Use Policy	2
Class Schedule	2
Grading Policy	3
Classroom Expectations	3
Class Assignments	3
Policy Changes	4
Other Classroom Supplies	4



EUDORA
HIGH SCHOOL

MATH 2

General Course Description

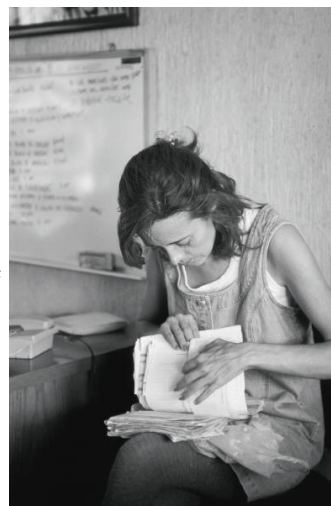
Math 2 is a review of computation of rational numbers and algebraic expressions and equations. Enrollment in this class will be based on teacher recommendation and/or test scores. Students will focus on arithmetic operations with integers and real numbers, problem solving techniques, estimation, measurement, data analysis, simple statistics, and solving linear equations.

In this course, you will investigate different topics that involve algebra and geometry, as well as statistics. You will acquire the knowledge to solve problems using more than one method, while getting to the same end

result.

An emphasis will be made in this class on mental math and computation. You will complete time trial cards every day at the beginning of class in an effort to improve on simple computation and to lessen dependency on calculators.

This class will not simply be taking notes



Spoon feeding, in the long run, teaches us nothing but the shape of the spoon."

—E. M. Forster

and completing worksheets. Finding applications to our knowledge is a big part of the learning process in Math 2. Finding these applications will involve using our different senses, as well as research skills and record keeping. With your knowledge, a calculator may not be necessary any more.

Course Objectives

The purpose of this course is for students to solve problems involving two- and three-dimensional figures from an algebraic and geometric perspective.

The objectives for the course, as outlined in the Eudora USD 491 Math Curriculum, adopted in April 2005, are listed here.

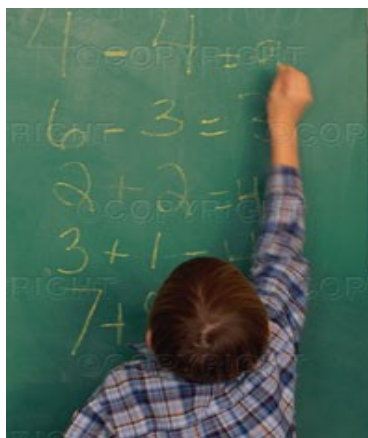
M.10.1 Students will use variables, symbols, real numbers, and algebraic expressions to

solve equations and inequalities in a variety of situations.

M.10.2 Students will analyze functions in a variety of situations.

M.10.3 Students will estimate, measure, and apply geometric formulas to solve for perimeter and area.

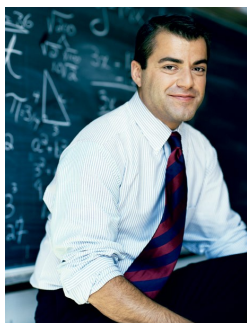
M.10.4 Students will estimate, measure, and apply geometric formulas to solve for volume and surface area.





If you need to contact your teacher once you have left the classroom, there are several ways you may do so.

If you are interested in purchasing your own graphing calculator, please ask for information.



To get a hold of your teacher outside of class time, here are some simple suggestions.

Additional Assistance

From time to time, it may become necessary for you to seek out extra assistance in your course work. If this sounds like something that may apply to you, here are some guidelines:

1. Do not be afraid to bounce an idea off of one of your classmates. Every student learns differently and someone else might have understood a point that you are unclear on. However, in asking a classmate for help, keep in mind the Academic

Dishonesty Policy the school enforces and whether you are abiding by this policy.

2. I arrive at or before 7:30 a.m. each morning before school. When I am not coaching a sport, I stay at school until at least 4:00 each afternoon.
3. If neither of these times accommodate your schedule, please discuss other options with me, so that your grade does not suffer as a result.
4. You may phone me at home,

but please use your better judgment. I have a 1 year old daughter who is a light sleeper. Please take this into consideration before dialing my number.

5. When chapter and/or unit exams are approaching, it is possible to explore the options of having weekend or evening study sessions to fit time around school activities and work schedules.

If nothing else, just ask for help!

Calculator Use Policy

While in this classroom, you will have the opportunity to use a graphing calculator or a scientific calculator that is property of the school. You will be assigned a particular numbered calculator to use whenever you are in this class. You are assigned this number so that any errors or damage to a calculator can be tracked accurately. If a calculator is not functioning as it should whenever you begin using one, please notify me

of what is happening and I will try to solve the problem as soon as possible.

The classroom set of calculators we will use in this class are such that each student will have access to one during class time. If you need to use one outside of class, you may do so, but must check them out from me **AFTER SCHOOL** and have it returned **BEFORE SCHOOL** the following

morning. This is to allow every student in every class an equal opportunity to use the calculators.

If you check out a calculator overnight and return it damaged or improperly functioning, you will be responsible for repair or replacement of the calculator. Replacements tend to cost around \$100 per graphing calculator and \$20 per scientific calculator. **Be responsible!**

Class Schedule

School Phone number: (785) 542-4980, ext. 1662

Fax number: (785) 542-4990

E-mail: scottkeltner@eudoraschools.org

Hour	Time	Class
1st hour	8:15-9:06	Algebra 2
2nd hour	9:10-10:01	Plan Period
3rd hour	10:05-10:56	Calculus & Statistics
4th hour	11:00-12:21	Math 2
5th hour	12:25-1:16	College Algebra
6th hour	1:20-2:11	Algebra 2
7th hour	2:15-3:06	Math Collaboration

If you or your parents are trying to get a hold of me, the most reliable method would be by using my email address. I try to respond to emails the same day I receive them.

If you have questions or concerns that cannot wait until school hours, I am in the phone book, but please be courteous with the time of day or evening **when** you are making your call before calling.

Grading Policy

Quarter Grades will be calculated as follows:

Tests	40%
Daily Work	40%
Activities/Projects	20%
Total	100%

Semester Grades will be calculated as follows:

1st Quarter	45%
2nd Quarter	45%
Final Exam	10%
Total	100%

The letter grades in the Student

Handbook (90-100=A, 80-89=B, 70-79=C, 60-69=D, below 60=F) are the **lowest** grade you can receive for the amount of points earned.

There will be instances where behaviors or study habits in and out of class may bring about the possibility of a better letter grade than your percent might reflect (in other words, "You get out what you put in.").

Some examples of these behaviors might include, but are not limited to: responsible in-class behavior, exemplary in-class participation, consistently arriving prepared and

on time for class to begin, responsible use of study times in and out of class time, and a willingness and desire to comprehend the subject matter presented.

This is not intended as an incentive to ask questions for the sake of asking questions or to "help someone else on their assignment", but it is intended for you to improve upon your study habits and knowledge of this course material.



At some time during the school year, every student will be asked to show their knowledge. This is not meant to embarrass you, but to display your understanding of a certain topic. Do not take offense if you are called on.

Classroom Expectations: Keltner's Law

The principles and ideas below are some basic expectations that I have of each of you. Above all, common courtesies should be exhibited at all times.

1. Attendance—Learning is far more difficult for someone who has to hear it third-hand. In the words of a monster truck announcer: **BE THERE!!!**

2. Be on time—Believe it or not, I am one of those teachers who keeps track of tardies. Do not expect the rest of class to wait for your arrival.

3. Be prepared—You wouldn't take a driving test without a set of keys, so why would you show up for class unprepared?

Also, I will NOT sign a pass for you to use the restroom or return to your locker within the first 15 minutes of class.

4. Have a positive attitude—I try my hardest to come to class each day with a smile on and would appreciate if you returned the favor. Math may not be at the top of your list, but we may as well help each other weather the

storm.

5. Do your best—"Anything less than your best is sacrificing the gift." Steve Prefontaine. This class may not be qualified as a sport, but there is an easy way for me to keep score of who is "winning."

6. Respect others and their belongings—Treat something borrowed as if it were yours.

7. No personal grooming—Whenever I start doing my hair on class time, so can you.

*"Don't be
that guy."*

—Mr. K

Class Assignments

Daily Work assignments are worth 10 points each, unless you are told otherwise. Daily Work grades all count for the same amount of points, unless you are told differently. Each daily assignment is just as important as another.

Class assignments are expected ON their due date, at the beginning of the class period.

Class work that is missed due to excused absences is covered in the Student Handbook.

In the event you will be absent from class due to a school activity, it is in the best interest of yourself and the rest of the class if you would get your assignment before the absence occurs.

Late work is not encouraged, but there are circumstances that may come up that prevent schoolwork from taking a priority. This does not mean that since you worked 12 hours at Sonic on Sunday, you could not complete your assignment for

Monday. If late work continues (more than 3 occurrences), no credit will be given for the work and the possibility of detention(s) will be discussed in order to see that the class work is getting completed.

If there are circumstances that come up that you would rather not discuss in front of the entire class, please let me know so we can avoid confusion and try to make appropriate arrangements.



No assignment is meant to be interpreted as being "busy work." The only way to get better at something is to practice, and that is what our assignments allow us to do: practice.



EUDORA
HIGH SCHOOL

MR. KELTNER
EUDORA HIGH SCHOOL
MATH INSTRUCTOR ROOM D-116

Eudora High School
2203 Church Street
Eudora, KS 66025

Phone: (785) 542-4980, ext. 1662
Fax: (785) 542-4990
E-mail: scottkeltner@eudoraschools.org

Check the class webpage out!
www.eudoraschools.org/keltner

Policy Changes

The policies listed in this syllabus are subject to change or modification. However, you will be made aware of any changes that will be made prior to them going into effect.

Other Classroom Supplies

From time to time, there are activities that we will conduct in class that require more than just a pen or pencil. When these types of activities come around, I will make every effort to try and provide all additional materials that are necessary for participation. Some of these materials might include:

- Rulers and/or yardsticks
- Protractors
- Stopwatches
- CBRs (Calculator-Based Rangers)
- Unit-to-Unit Cables (that allow sending programs between calculators)

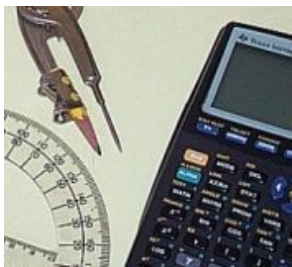
In addition to completing projects in class, there

are several different ways you will experience technology in this class.

Some other types of technology you will use in class this year include:

- Smart Board
- Laptop computers
- Data collection probes that link with your TI-84 calculator
- Document cameras that display worksheets, tables, graphs, and pictures from class examples

There are plenty of other opportunities to use technology in class, and you may have the opportunity to be some of the first students in the school to try them out.



A graphing calculator is not the only piece of technology you will have access to in this class. We will be incorporating several different types of instructional media throughout the year.